



Peer Reviewed

Title:

2 Fields + 3 Houses = A Landscape [Transforming the American Garden: 12 New Landscape Designs-Exhibitor]

Journal Issue:

[Places, 3\(3\)](#)

Author:

[Stauffacher Solomon, Barbara](#)

Publication Date:

1986

Publication Info:

Places

Permalink:

<http://escholarship.org/uc/item/7ws5h855>

Acknowledgements:

This article was originally produced in Places Journal. To subscribe visit www.places-journal.org. For reprint information contact places@berkeley.edu.

Keywords:

landscape, architecture, design, garden, field, house, drawing, barbara stauffacher solomon

Copyright Information:

All rights reserved unless otherwise indicated. Contact the author or original publisher for any necessary permissions. eScholarship is not the copyright owner for deposited works. Learn more at http://www.escholarship.org/help_copyright.html#reuse



eScholarship
University of California

eScholarship provides open access, scholarly publishing services to the University of California and delivers a dynamic research platform to scholars worldwide.

There is no line where the landscape stops and the architecture begins. People move through wall of green and glass as easily as they see the two with the same glance.

I have made much of green rectangles in my drawings and landscapes. They are paragon, paradigm, panacea and paradise. Materials change. Scale changes. Here the rectangles are lavender. Order is in the furrows of the fields as it is in the plans of the houses. Order is orientation and cultivation; enclosure makes a landscape into a paradise; magic is where illusion is reality and opposites merge. A greenhouse is a garden. A cypress wall is architecture. A roofless room is a garden. Within a wisteria arcade there is architecture.

This project has two sites. If the drawing, which happens to denote ideas about landscapes and buildings, is an end in itself, the site is the five 12-by-9-inch pieces of paper. If the drawing, denoting a garden with three buildings, is intended to be built, the site is a piece of land bordering a slough of the Petaluma River where it divides Marin from Sonoma County as it enters San Francisco Bay.

Drawing No. 1

The south elevation (1 inch = 100 feet) of three structures: two boathouses and a greenhouse/dwelling fronted by two flower fields of Spanish lavender (*Lavandula stoechas*). A lap pool segments the fields. Meadows, reseeded and luxuriant with California poppies (*Eschscholzia californica*), extend to the boathouses and connect the man-made garden with the meadows and hills beyond. A triple arbor of wisteria (*W. sinensis*) encloses the site to the west; a wall of Monterey cypress (*Cupressus macrocarpa*) with seven doorways screens the project from the road. Four tall palms (*Washingtonia*) announce the entrances. The eastern view opens to natural grasslands and marshes. Vines (*Rosmarinus officinalis* "Prostratus," *Lantana montevidensis*, *Coprosma kirkii*, and *Cenothus gloriosus*) drip from urns, roof-decks and greenwalls. The northern elevations abut the slough.

Drawing No. 2

The west houseboat and portico of the greenhouse/dwelling (1/8 inch = 1 foot).

Drawing No. 3

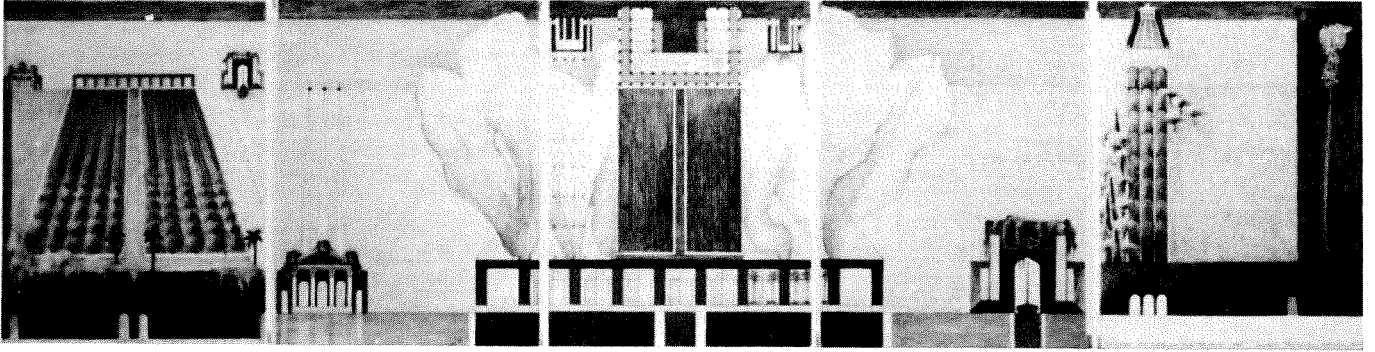
Partial plan of the complex (1 inch = 100 feet). Elevation (1/8 inch = 1 foot).

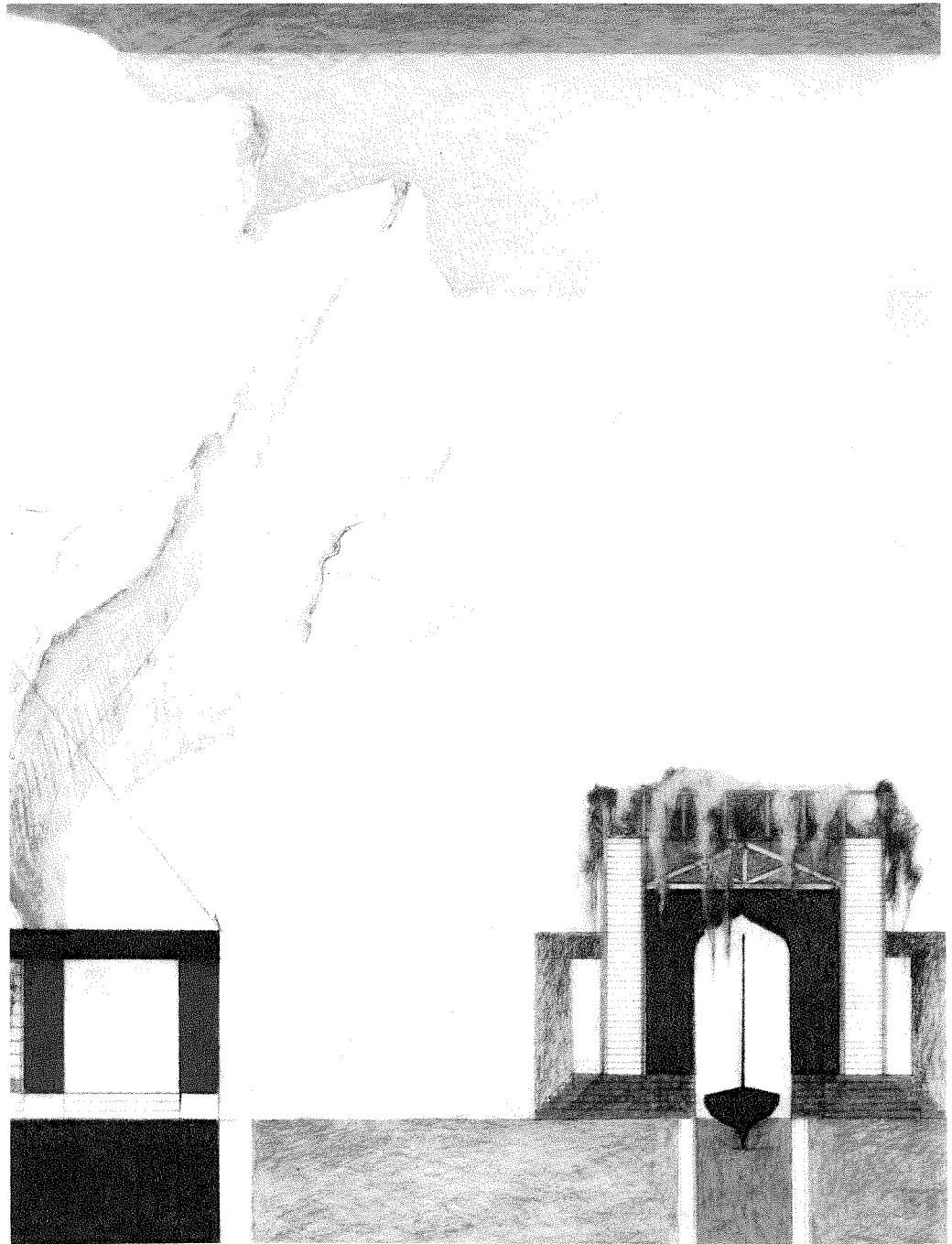
Drawing No. 4

The east boathouse and the portico of the greenhouse/dwelling (1/8 inch = 1 foot).

Drawing No. 5

The poppy meadow enclosed by the triple arbor partially emerges in a boscage of blue Italian cypress (*C. s. "Glauca"*), olives (*Olea europaea*), and eucalyptus (*E. polyanthemus*), the cypress wall and the lavender field.





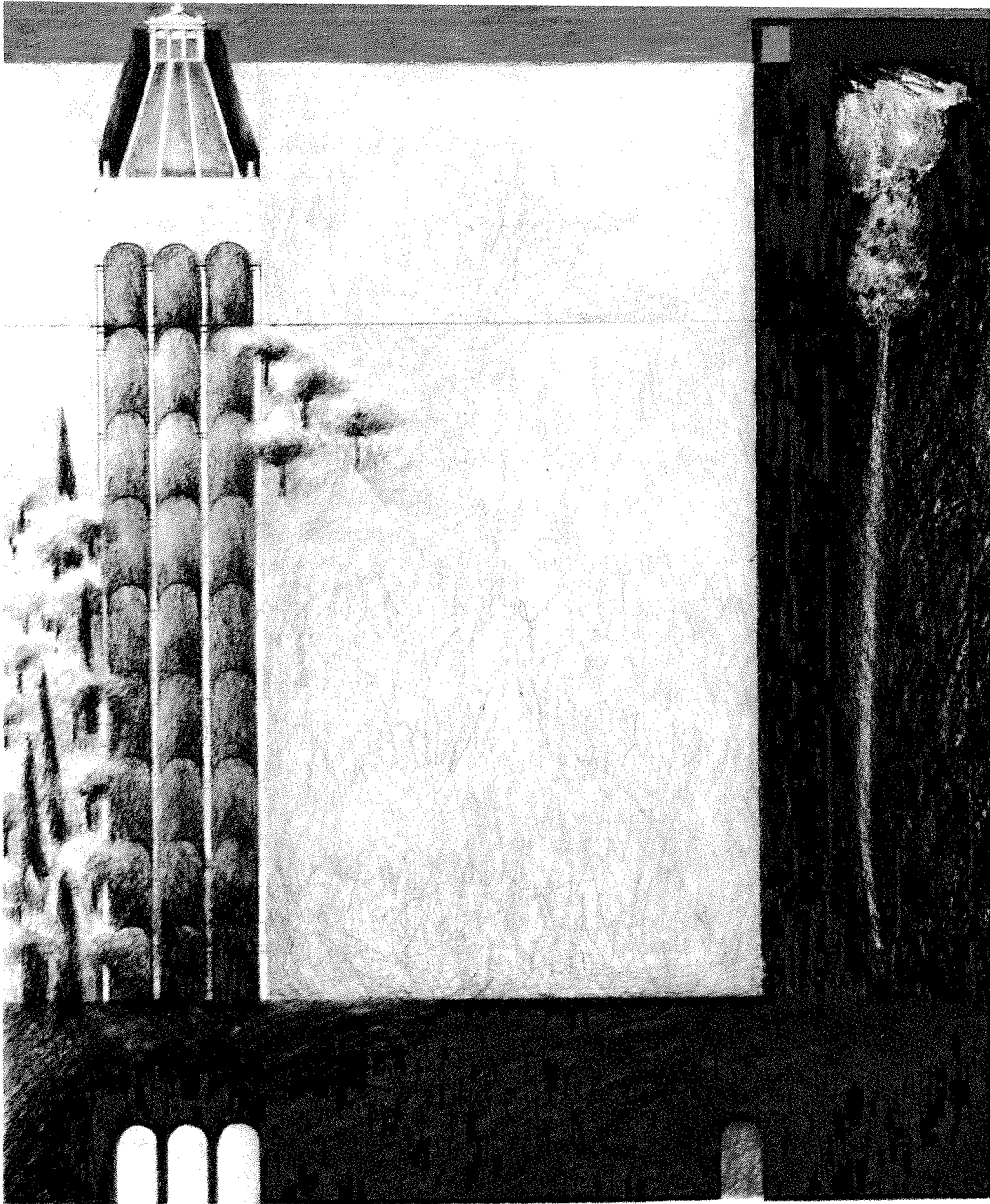


Fig. 202 Two Fields and Three Structures 1985 Barbara Thompson, Solon, OH